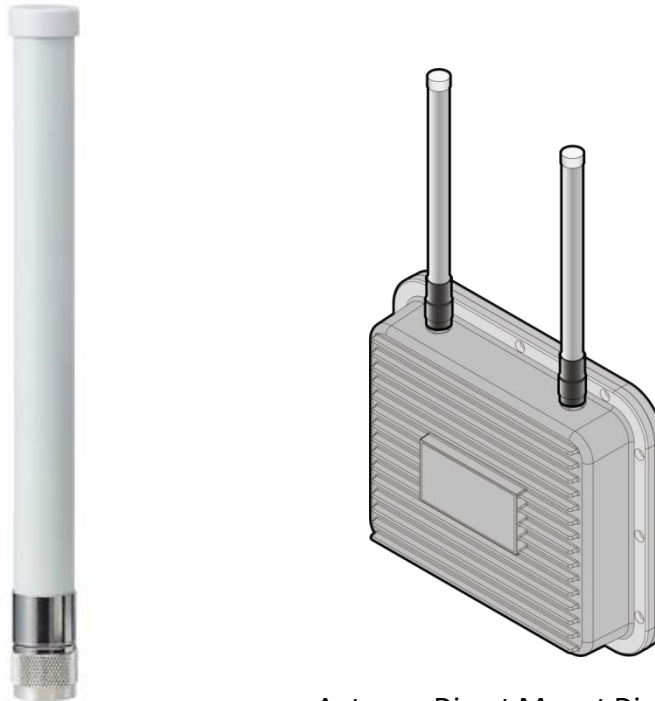


# AOA-2458-79AM

## 2.4 GHz+5 GHz Outdoor Omni Antenna

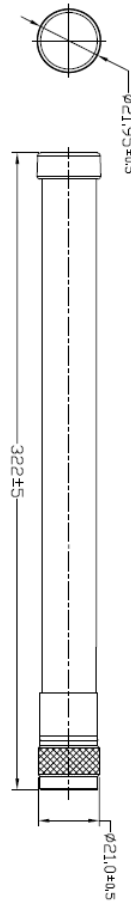


Antenna Direct Mount Diagram

### Specifications

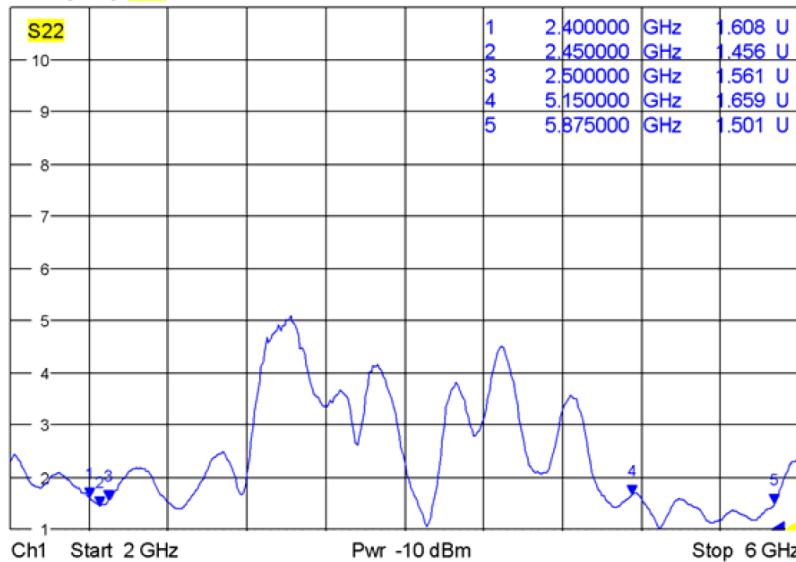
Frequency Range	2400 – 2500 MHz 5150 – 5875 MHz
Gain	7 dBi @ 2400 – 2500 MHz 9 dBi @ 5150 – 5875 MHz
VSWR	2.0 : 1 Max.
Polarization	Linear, Vertical
Power handling	2W
Impedance	50 ohm
Connector	N male
Antenna Length	322 mm
Operating Temperature	-40°C ~ 85°C
Operating Humidity	5% ~ 95% (Non-condensing)

# 2D Drawing Dimension

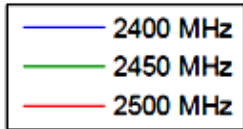


# VSWR

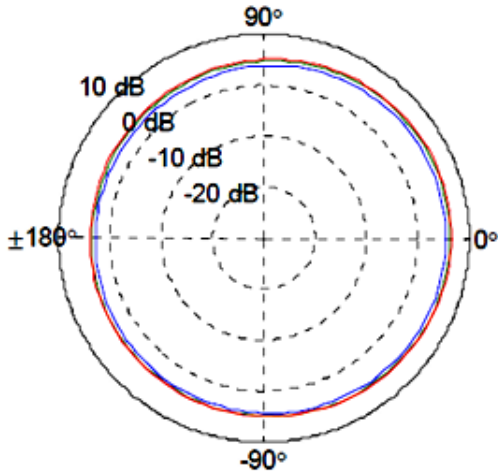
Trc2 **S22** SWR 1 U / Ref 1 U Cal int 2 of 2 (Max)  
 Mem3[Trc2] **S22** SWR 1 U / Ref 1 U Invisible



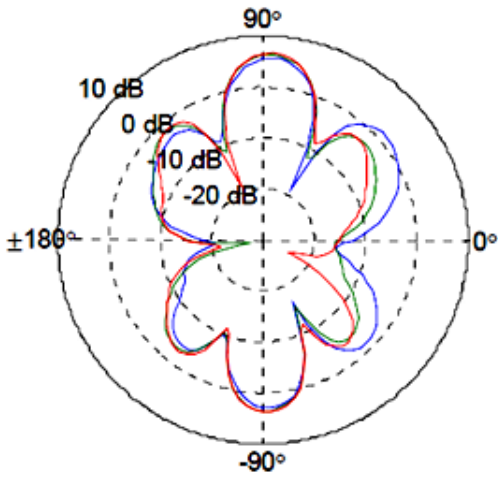
# Radiation Pattern



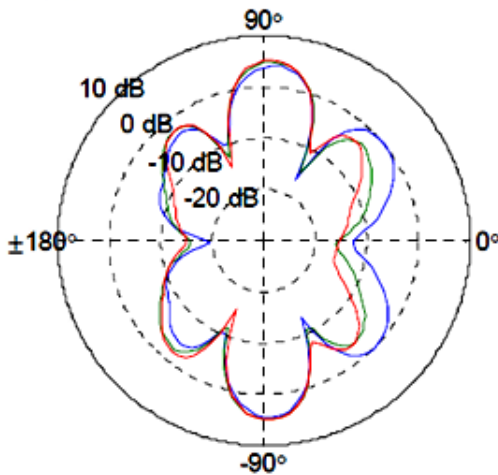
XY Plane

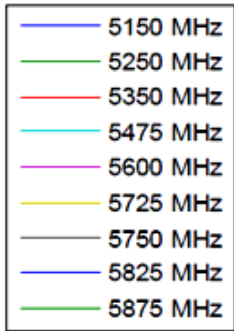


ZX Plane

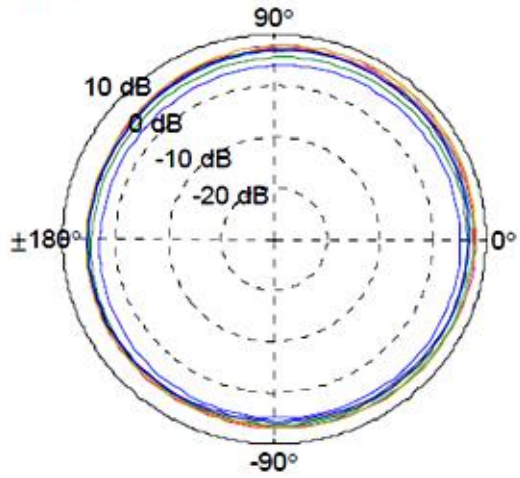


YZ Plane

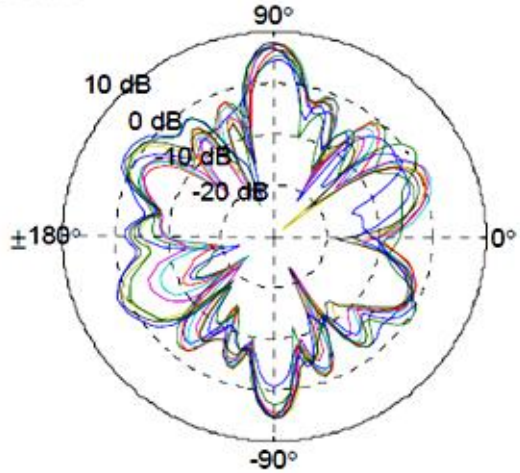




XY Plane



ZX Plane



YZ Plane

